

BD PureWick

Female external catheter urine collection system

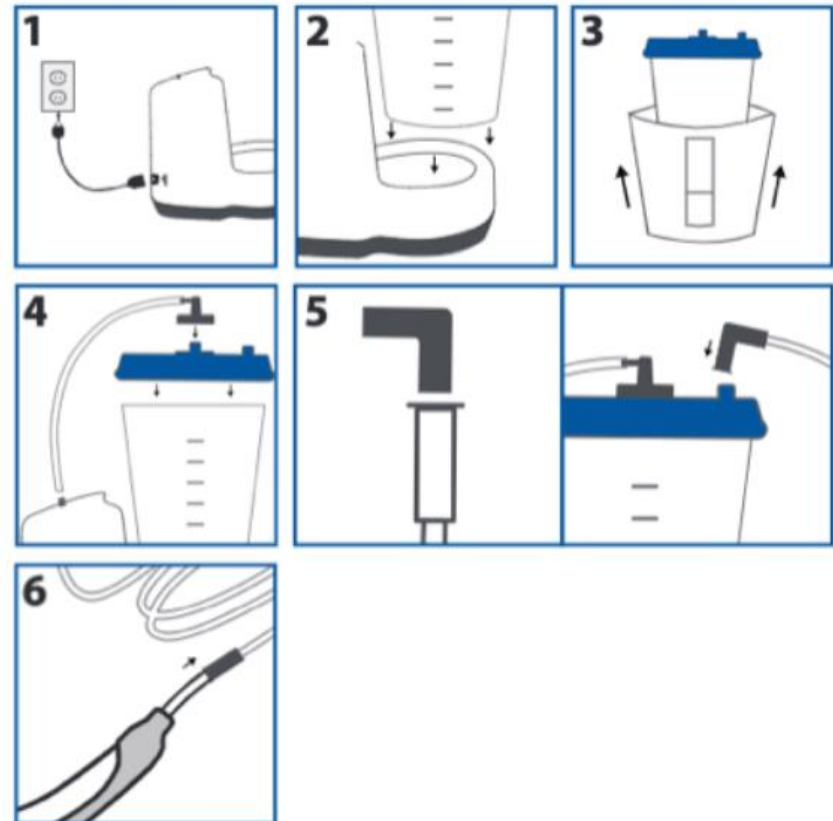
www.purewickathome.com

- Cost
 - Not covered by insurance
 - Initial Cost
 -
 - Model A: Plug - \$299
 - Model B: Plug and Rechargeable Battery - \$399
 - Monthly Cost
 - Wicks – 30 wicks in a box - \$195 per box



BD PureWick™ Urine Collection System setup

1. Plug power cord into device outlet and into the A/C power outlet. Note: Make sure the power switch is turned off.
2. Place collection canister in the base and press down firmly on the lid of the device making sure lid is sealed.
3. Optional: Slip privacy cover onto the canister prior to placing canister into base.
4. Attach pump tubing (short tube) to the PureWick™ Urine Collection System connector port and the connector port on collection canister lid.
5. Attach the elbow connector to the collector tubing (long tube) and connect elbow connector to the connector port on collection canister lid.
6. Connect other end of collector tubing (long tube) to a PureWick™ External Catheter.



Where does the urine go?

The Urine is pulled away from the body by the PureWick™ Female External Catheter. The PureWick™ Urine Collection System pulls the urine through the collector tubing into the collection canister.

How much urine can the collection canister hold?

The PureWick™ Urine Collection System canister should be emptied before volume reaches 1800cc (ml), or as needed.

Does underwear fit over it?

Yes, wearing underwear while using the PureWick™ Female External Catheter can help keep the wick in place-but it's not necessary.

Can I use it when running errands?

Unfortunately, no because the PureWick™ Urine Collection System needs to be sitting on a flat surface and plugged into an electrical outlet.

Is the PureWick™ Female External Catheter reusable?

No. It's recommended that the wick is replaced every 8-12 hours or if it's soiled with feces or blood. Skin should be assessed to see if it's been compromised and perineal care should be performed prior to placement of a new wick.

How many PureWick™ Female External Catheters do I need?

While everyone's use of the PureWick™ Female External Catheter may vary, we recommend using a new one every 8-12 hours.
